

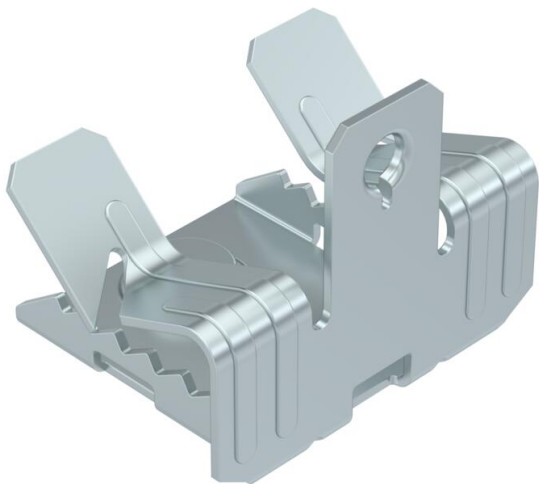
# Technical data sheet

## Support clamp, with threaded bolt at bottom

Item number: 1488293



Support clamp with M6 threaded bolt at bottom for individual mounting solutions. Fastening through knocking onto steel girders.



- St** Steel
- ZL** Zinc slat

### Master data

Item number	1488293
Type	SCUTB 7-13 M6
Description 1	Beam clamp
Description 2	with threaded bolt M6x9 mm
Manufacturer	OBO
Dimension	7-13mm
Material	Steel
Surface	Zinc slat
Surface standard	
Smallest sales unit	100
Unit of quantity	Piece
Weight	2.9 kg
Weight unit	kg/100 pc.

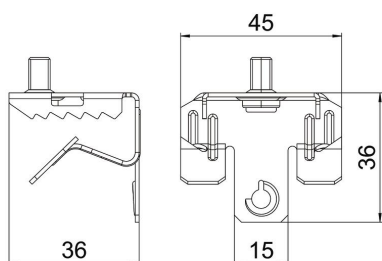
# Technical data sheet

## Support clamp, with threaded bolt at bottom

Item number: 1488293



### Dimensions



Length	36 mm
Width	45 mm
Height	36 mm
Dimension L	36 mm

### Technical data

Connection type/component	Thread
Fastening type	Clamp
Flange thickness F max.	13 mm
Flange thickness F min.	7 mm
Thread	M6 x 9 mm
Thread metric	6
Hinge, adjustable	no
Hinged	no