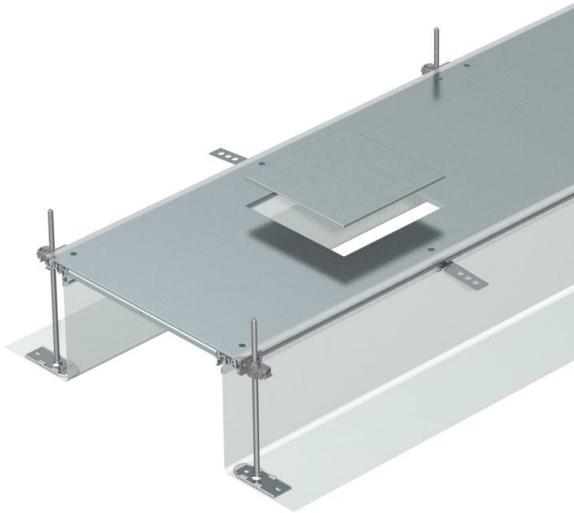


Technical data sheet

Trunking unit for GES4, height 40–240 mm

Item number: 7424140



Ready-to-mount screed-flush trunking unit for cable routing, consisting of three system covers, two side profiles with attached flexible side wall made of metallic mesh, floor covering contact profiles with H = 3 mm. For dry interior rooms with dry-care floors. Also suitable for wet-care floors with appropriate system accessories. The scope of delivery contains six height-adjustable fastening brackets, six screed ties and three lid butt seals for nominal trunking widths 200, 300 and 400 or six lid butt supports for trunking widths 500 and 600. The essential height adjustment units (please observe adjustment height) for the 400, 500 and 600 cover support are not contained in the scope of supply, please order separately. Up to the nominal width of 400, the trunking covers are screwed on.

With screw-on device installation lids, each with an installation opening for a square installation unit nominal size 4.



St Steel

FS Strip galvanized

Master data

Item number	7424140
Type	OKA-G30040240D4
Description 1	Flushfloor trunking unit
Description 2	for service unit GES10
Manufacturer	OBO
Dimension	2400x300x240
Material	Steel
Surface	Strip galvanized
Surface standard	DIN EN 10346
Smallest sales unit	2.4
Unit of quantity	Metre
Weight	1147.5 kg
Weight unit	kg/100 m

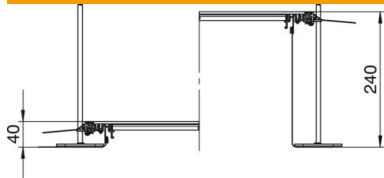
Technical data sheet

Trunking unit for GES4, height 40–240 mm

Item number: 7424140



Dimensions



Length	2,400 mm
Width	300 mm

Technical data

Mounting opening cover	yes
Covers	3
Number of planned flush-mount units	3
Mounting system fastening type	Floor
Floor plate	no
Cover fastening, locking	no
Seal installation option	yes
Installation opening for on-floor tank	no
Decouplable	yes
Suitable for expansion joint	no
Mesh wall	yes
Trunking height, max.	240 mm
Duct height, min.	40 mm
Cover material thickness	4
Minimum screed height	40
With connection opening	yes
With equipotential bonding	no
With separating retainer	no
With overhang	yes
Mounting opening	For service outlet
Mounting opening	Square
Nominal size for device installation units	4
Height-adjustment range, max.	240 mm
Height-adjustment range, min.	40 mm
Removable cover	yes